



DU PONT
HANDEL EN MAATWERK

PK1 - PK2 - PK3

Technische Fiche

User Guide

Rotary Panel RF Remote Controller

The PK series RF wireless rotary remote controller is designed control single color, dual color or RGB LED lighting by rotate or push the knob. 256 level brightness adjustment ensures smooth and accurate dimming without any flickering and millions of colors can be achieved. The remote controller can control 1 zone with endless receivers and all receivers can be controlled synchronously. The remote can be wall mounted or stuck on wall easily by 3M glue.

Feature

- Apply to single color, dual color, RGB LED controller, dimming driver or smart lamp.
- Adopt 2.4GHz wireless technology, remote distance up to 30m.
- Each remote can match one or more receiver.
- CR2032 button battery power supply.
- Removeable and stick anywhere easily, or mount on wall use panel base.

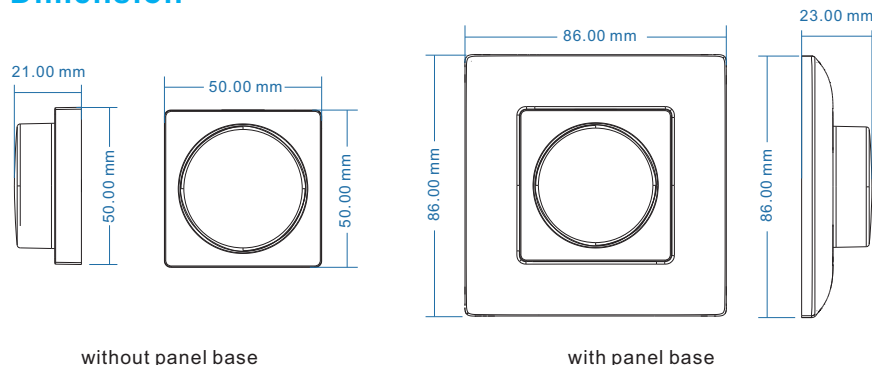
Technical parameter

- Output signal: RF(2.4GHz)
- Working voltage: 3VDC(CR2032)
- Working current: < 5mA
- Standby current: < 10 μ A
- Standby time: 1 year
- Remote distance: 30m

Model table

| Model | Name | Application |
|-------|---------------------------------|-------------------|
| PK1 | Dimming rotary remote | single color |
| PK2 | Color temperature rotary remote | dual color(WW+CW) |
| PK3 | RGB rotary remote | RGB |

Dimension





DU PONT
HANDEL EN MAATWERK

PK1 - PK2 - PK3

Technische Fiche

Match guide

Remote match with 2.4G RF controller, dimming driver or smart lamp.
there are two kinds of method to match receivers.

• Use Match key

Match with controller(with match key)

1. Match: Short press match key, within 5s, push the knob.
2. Delete: Long press match key for 5s, delete all matched remote.

• Use Power-up

Match with controller(without match key), dimming driver or smart lamp

1. Match: Switch off the power, then switch on power again,
short press the knob 3 times quickly within 5s after power on,
the link is done once the light blinks 3 times.
2. Delete: Switch off the power, then switch on power again,
short press the knob 5 times quickly within 5s after power on,
the unlink is done once the light blinks 5 times.

Knob function

1. PK1 single color dimming remote

- **Push:** Turn on or off light.

After turn on light:

- **Rotate:** Rotate knob to adjust brightness (2.5 turns, 50 levels).
- **Long push(1-5s):** Continuous 256 levels brightness adjustment.

2. PK2 color temperature remote

- **Push:** Turn on or off light.

After turn on light:

- **Rotate:** Rotate knob to change color temperature or brightness (2.5 turns, 50 levels).
- **Push twice:** Switch between color temperature or brightness adjustment.
- **Long push(1-5s):** Continuous 256 levels brightness adjustment.

3. PK3 RGB remote

- **Push:** Turn on or off light.

After turn on light:

- **Rotate:** Rotate knob to change RGB color (3 turns, 60 colors) or brightness (2.5 turns, 50 levels).
- **Push twice:** Switch between RGB color or brightness adjustment.
- **Long push(1-5s):** Continuous 256 levels brightness adjustment.



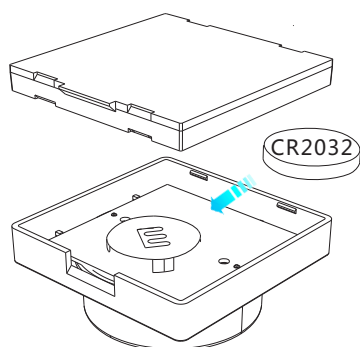
DU PONT
HANDEL EN MAATWERK

PK1 - PK2 - PK3

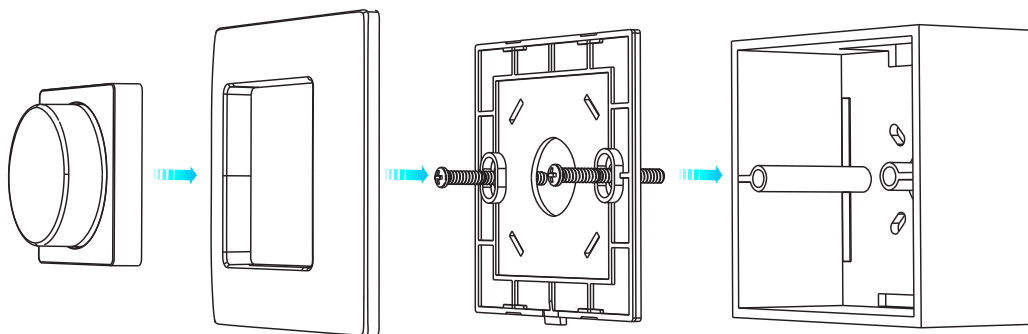
Technische Fiche

Installation diagram

- **Replace battery**



- **Mount on wall with 86x86 European standard panel base**



Safety information

1. Read all instructions carefully before you begin this installation.
2. When installing battery, pay attention to the battery positive and negative polarity.
A long time without the remote control, remove the battery.
When remote distance becomes smaller and insensitive, replace the battery.
3. If no response from the receiver, please re-match the remote.
4. Gently handle remote, beware of falling.
5. For indoor and dry location use only.